

Arm-held, the wearable ultrasound

MyLabOne[™]VET



EQUINE

BOVINE

CANINE

EXOTIC ANIMALS

SWINE

**VET
ULTRASOUND**

RESEARCH

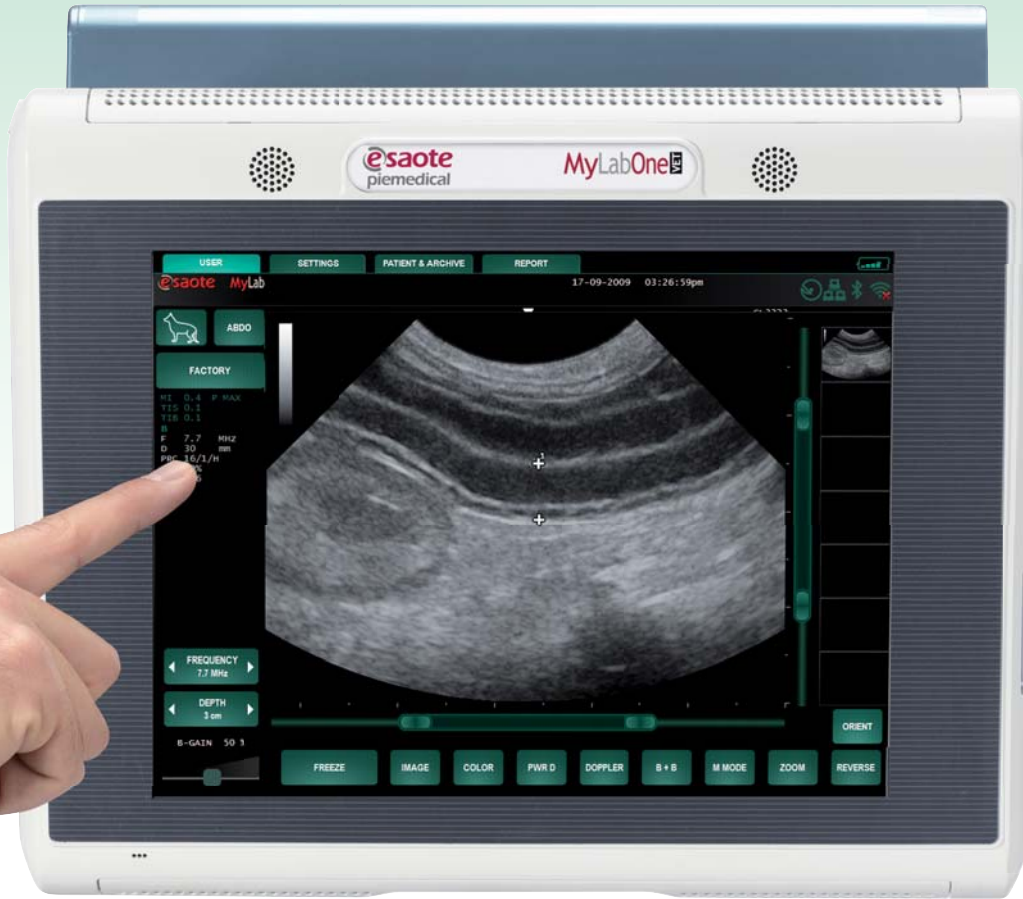
FELINE

VETERINARY INDUSTRIES



In touch with **Veterinary**

High-end Vet Ultrasound in One small package



- > Quick and Precise Animals Care: Imaging, Diagnosing, Printing
- > Ease of Use
- > Dedicated Simplified Interface
- > Full touch screen control

MyLabTMOne^{VET}



- > Enlarged Image Visualization
- > User-friendly Simplified Interface
- > Double level Touch Screen Interface
- > Customizable Clinical Protocols
- > Wireless networking for data storage and printing

MyLabTMDesk



- > Image management made easy
- > Direct networking (Wireless, LAN)
- > Review, modify and examination print out (reports and images)
- > Data export and back-up: CD/DVD burning, e-mail, etc...

MyTutor

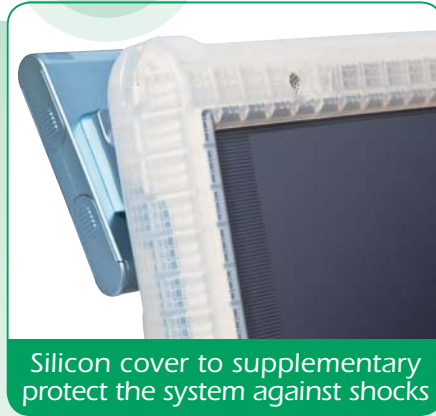


- > Tutorial for selected applications
- WORK IN PROGRESS

Easy Cleaning



Protection cover



MyLabOneTM VET

Probe range



Linear endorectal



Micro Convex



Linear

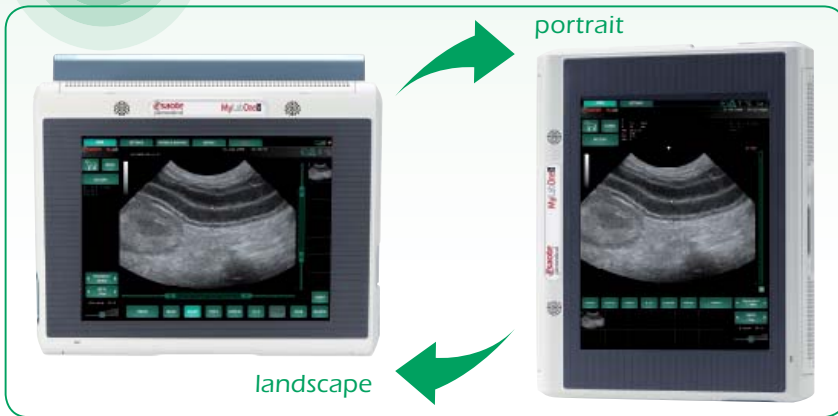


Remote controls integrated on the probe (customizable)



Convex

Auto-orientation



Arm-held solution



Functional buttons on the handle and probe





**DESIGNED
AROUND
YOU**

Portable

Belt and
Wrist locker

Height
Adjustment

Roll stand

Docking Station



0344

Esaote S.p.A.

International Activities: Via di Caciolle, 15 50127 Florence, Italy, Tel. +39 055 4229 1, Fax +39 055 4229 208, international.sales@esaote.com

www.esaote.com

FRANCE

Esaote France S.A.R.L.
22, rue Pierre Grange, 94124 Fontenay-sous-Bois
Tel. +33 1 4871 2525, Fax +33 1 4871 3630
esaote.france@wanadoo.fr

GERMANY

Esaote Biomedica Deutschland GmbH
Max-Planck-Straße 27a, 50858 Köln
Tel. +49 221 9268 00 00, Fax +49 2234 9679 628
info@esaote.de

SPAIN

Esaote España S.A.
Auda San Sebastian, s/n 08960 Sant Just Desvern, Barcelona
Tel. +34 93 473 2090, Fax +34 93 473 2042
info@esaote.es

THE NETHERLANDS AND BELGIUM

Pie Medical Benelux B.V.
P.O. Box 1132, 6201 BC Maastricht
Tel. +31 43 3824650, Fax +31 43 3824651
benelux@pie.nl

UK

Esaote Europe BV
UK Branch Office, 400 Thames Valley Park Drive,
Reading, Berkshire. RG6 1PT
Tel. +44 118 965 3500, Fax +44 709 288 0231
ukinquiries@esaote.nl

USA

Biosound Esaote Inc.
8000 Castleway Drive,
P.O. Box 50858, Indianapolis, IN 46250
Tel. +1 317 813 6000, Fax +1 317 813 6600
info@biosound.com

BRASIL

Brasilian Direct Office
Rua Tomas Carvalhal, 711, 04006-001 São Paulo SP
Tel. +55 11 2589 0533 Fax +55 11 2589 0527
edson.lopes@esaote.com

ARGENTINA

Esaote Latinoamérica S.A.
San Martín 551, Cuerpo 'C', Piso 8, (C1004AAK) Buenos Aires
Tel. +54 11 4326 1832, Fax: +54 11 4328 1245
info@esaote.com.ar

INDIA

Esaote Asia Pacific Diagnostic Private Limited
F-1, Level 1, Global Arcade, Near Global Business Park
M.G. Road, Gurgaon (Haryana)-122002
Tel. +91 124 4775600, Fax +91 124 4775699
info@esaote.in

CHINA

Esaote China Ltd
18/F, 135 Bonham Strand Trade Centre,
135 Bonham Strand, Sheung Wan, Hong Kong
Tel. +852 2545 8386, Fax +852 2543 3068
esaote@esaotechina.com

RUSSIAN FEDERATION AND CIS

Esaote S.p.A.
18 Leningradsky prospekt, off. 5 and 6, Moscow 125040
Tel. +7 495 232 0205, Fax +7 495 232 1833
esaotemoscov@yandex.ru